

Python Debug

PC interface for Python script debug

Interface Specification

© Telit Communications S.p.A. 2006

1 Scope

Description document regarding the tool sending all Python Debug logs inserted in a python script, running on a TELIT GPS module, to an Hyper Terminal program.

2 Introduction

In a Telit Module using GPS, the only way to see all debug logs inserted in a python script is to use Python Debug, a tool that generate a virtual COM to be connected to a program displaying all data coming from this COM.

To use Python Debug, first you must install all the USB drivers that make possible the communication between your GPS module and your PC USB port.

3 Using Python Debug

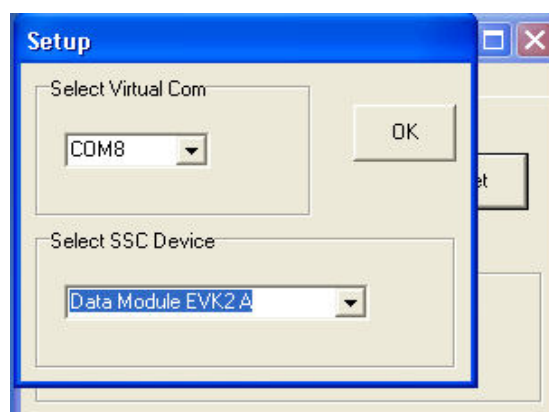


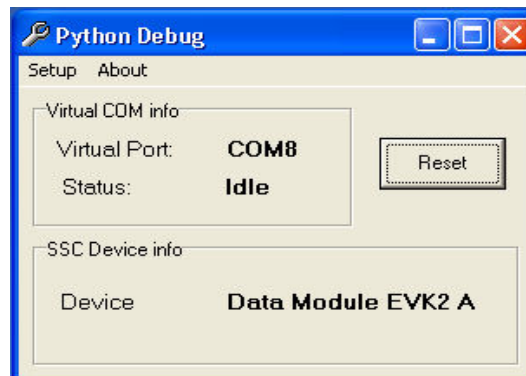
The tool is identified by the following Icon on your desktop:

When running, the main window is the following:

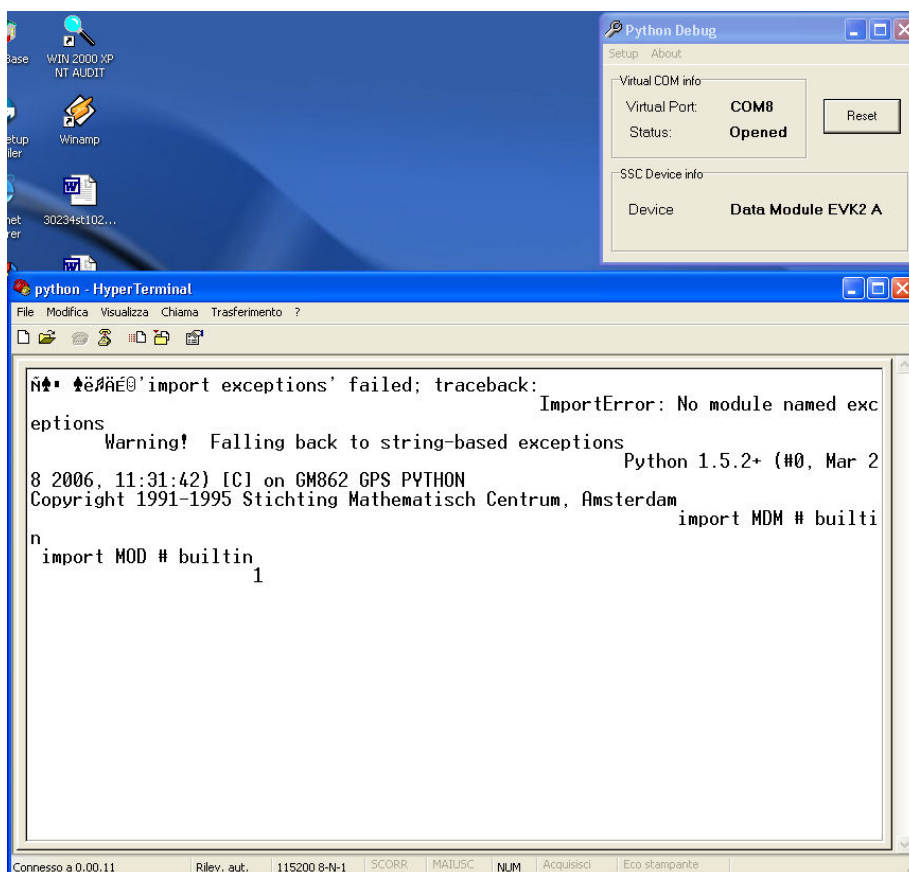


First of all, you have to click on the setup main menu option, select the virtual COM that will be created and the SSC device to be used:





After having confirmed the choice, you can run an Hyper Terminal connected to COM8, for example, and turn on your module. If a python script is loaded in the internal memory, it starts automatically and you can see all the debug logs:



Every time you turn off your module it is recommended that you push the “Reset” button to re-initialize Python Debug. You can’t change virtual port or SSC device if an Hyper Terminal is still connected, first you have to disconnect it.