

REVISION

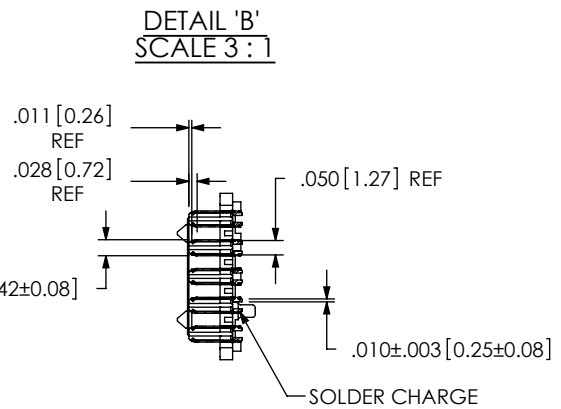
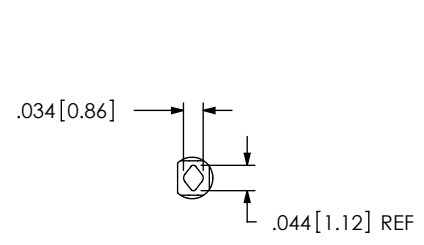
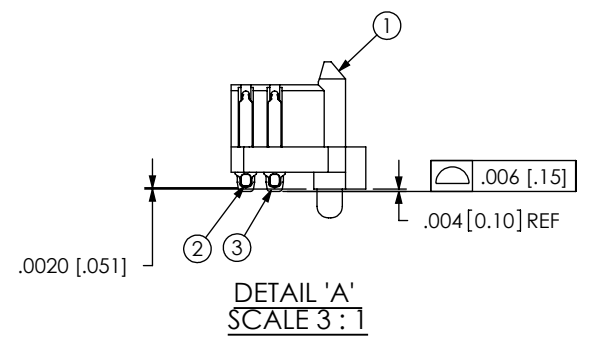
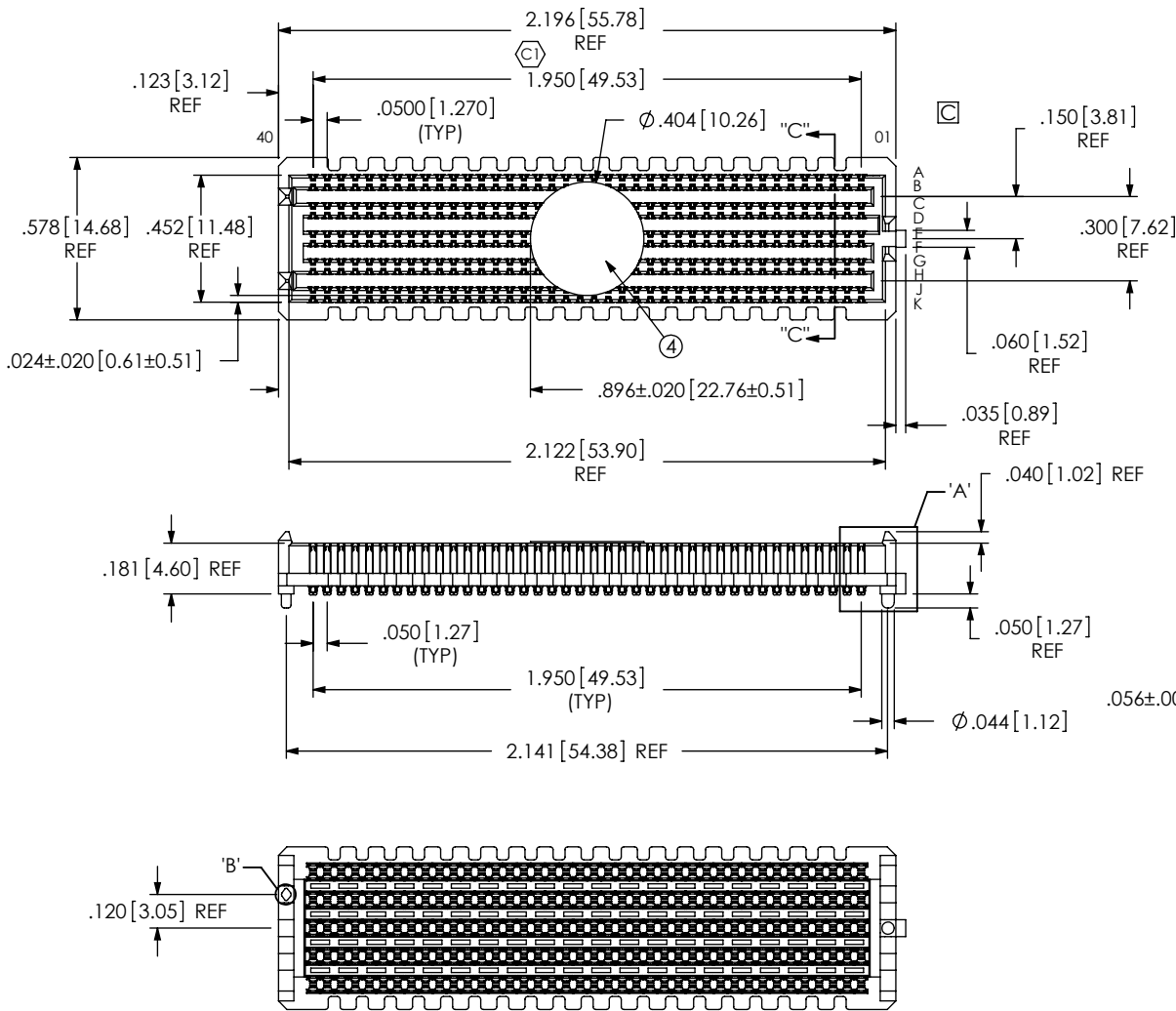
A	GP	R SKEES
10/31/2007		ECN-82562
RELEASE FOR PRODUCTION.		
B	DS	M HAMMAN
5/30/2008		ECN-91952
ADD FOOTPRINT SHEETS 2 & 3		

C	TP	J HENRY
12/19/2008		ECN-102771

NOTES: CHG NOTE 4 FROM FROM TRAY TO TAPE & REEL. UPDATE BOM FROM TRAY-SEAM015-40-2-10-AP-T TO CT-SEAM032MS. ADD T&R VIEW: SHEET 4, TOP VIEW SHEET 1, RECOMMENDED PCB LAYOUT SHEET 2 & RECOMMENDED STENCIL SHEET 3. ADD VITA SPEC PINOUTS TO THESE VIEWS. ROWS A THRU K, AND POSITIONS 01-40. ADD K-DOT-.404-.500-.005 TO BOM & AND ALL VIEWS

NOTES:

1. VITA 57 CONNECTOR.
2. (C) REPRESENTS A CRITICAL DIMENSION.
3. MINIMUM PUSHOUT FORCE: .75 LB.
4. PARTS TO BE PACKAGED IN TAPE & REEL. (C)



ACCEPTANCE OF DRAWING:
 ACCEPTED WITH DEVIATIONS LISTED
 ACCEPTED
 DATE: _____
 COMPANY: _____
 CUSTOMER SIGNATURE: _____
 PRINTED NAME: _____
 PHONE NO.: _____
 FAX NO.: _____

UNLESS OTHERWISE SPECIFIED, DIMENSIONS ARE IN INCHES. TOLERANCES ARE:
 DECIMALS ANGLES
 .XX: ±.01 [.3] 2°
 .XXX: ±.005 [.13]
 .XXXX: ±.0020 [.051]

PROPRIETARY NOTE
 THIS DOCUMENT CONTAINS INFORMATION CONFIDENTIAL AND PROPRIETARY TO SAMTEC, INC. AND SHALL NOT BE REPRODUCED OR TRANSFERRED TO OTHER DOCUMENTS OR DISCLOSED TO OTHERS OR USED FOR ANY PURPOSE OTHER THAN THAT WHICH IT WAS OBTAINED WITHOUT THE EXPRESSED WRITTEN CONSENT OF SAMTEC, INC.

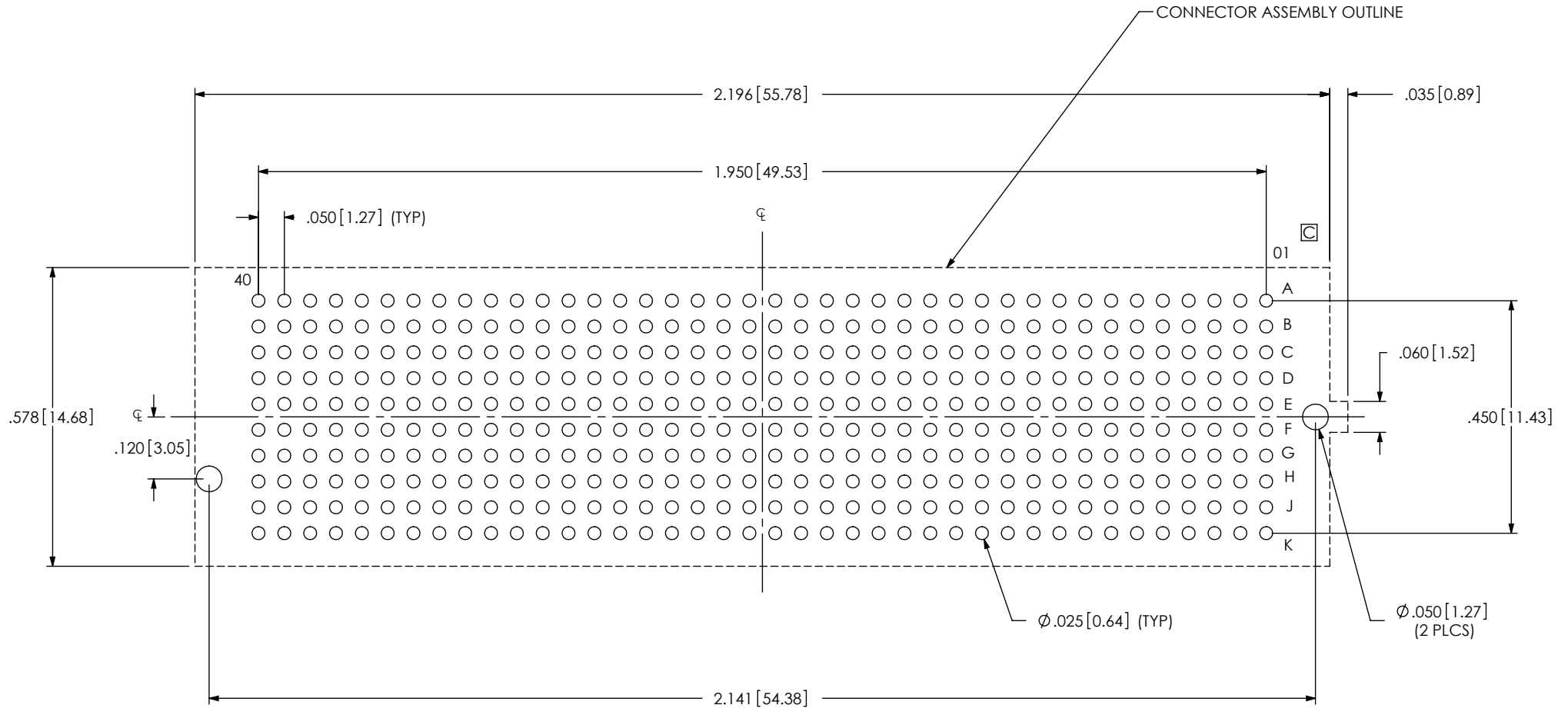


520 PARK EAST BLVD., NEW ALBANY, IN 47150
 PHONE: 812-944-6733 FAX: 812-948-5047
 e-Mail: info@SAMTEC.com code: 53322

DO NOT SCALE DRAWING SHEET SCALE: 1.5:1
 PLATING:
 CONTACT AREA: .000030 GOLD OVER .000050 NICKEL
 REMAINDER: .000200 REF TIN OVER .000050 NICKEL
 SOLDER COMPOSITION: 95.5% TIN/3.8% SILVER/7% COPPER CHARGE TAIL

DESCRIPTION: .050 PITCH TERMINAL ARRAY ASSEMBLY
DWG. NO. ASP-134602-01
BY: G. PURVIS 10/31/2007 SHEET 1 OF 4

ITEM NO.	PART NUMBER	QUANTITY	MATERIAL
1	SEAM-40-02.0-10-A	1.0000	VECTRA E130i, COLOR: BLACK
2	T-1M36-02.0-S	400.00	BRUSH ALLOY 390 HT
3	SDT-645-012-02	400.00	SOLDER 95.5% TIN/3.8% SILVER 7% COPPER
4	K-DOT-.404-.500-.005	1.0000	POLYIMIDE FILM
4	CT-SEAM032MS	1.0000	POLYIMIDE FILM (KAPTON)



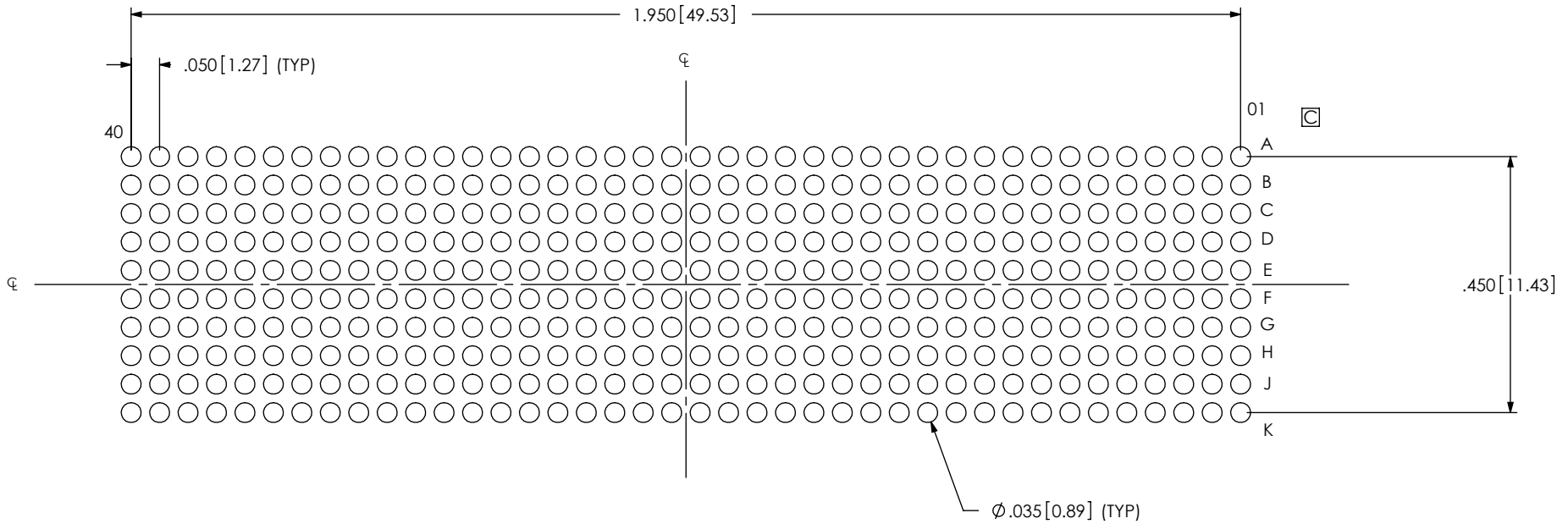
ALL DIMENSIONS ARE SYMMETRIC ABOUT CENTERLINE

PROPRIETARY NOTE
 THIS DOCUMENT CONTAINS INFORMATION
 CONFIDENTIAL AND PROPRIETARY TO
 SAMTEC, INC. AND SHALL NOT BE REPRODUCED
 OR TRANSFERRED TO OTHER DOCUMENTS OR
 DISCLOSED TO OTHERS OR USED FOR ANY
 PURPOSE OTHER THAN THAT WHICH IT WAS
 OBTAINED WITHOUT THE EXPRESSED WRITTEN
 CONSENT OF SAMTEC, INC.



520 PARK EAST BLVD, NEW ALBANY, IN 47150
 PHONE: 812-944-6733 FAX: 812-948-5047
 e-Mail: info@SAMTEC.com code: 55322

STENCIL THICKNESS TO BE .0060[0.152]

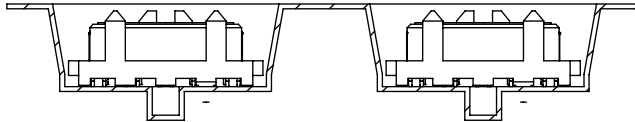
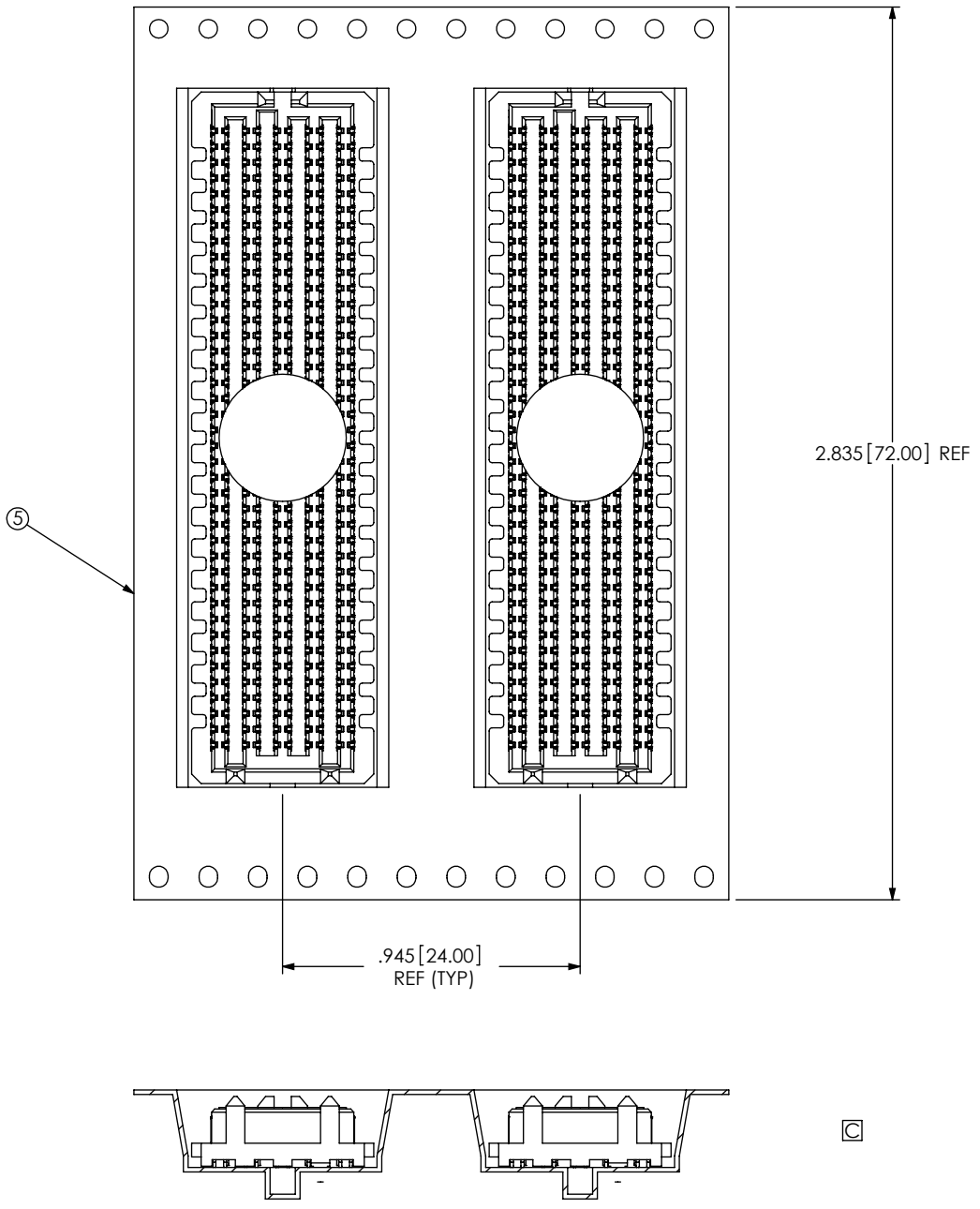


ALL DIMENSIONS ARE SYMMETRIC ABOUT CENTERLINE

PROPRIETARY NOTE
 THIS DOCUMENT CONTAINS INFORMATION
 CONFIDENTIAL AND PROPRIETARY TO
 SAMTEC, INC. AND SHALL NOT BE REPRODUCED
 OR TRANSFERRED TO OTHER DOCUMENTS OR
 DISCLOSED TO OTHERS OR USED FOR ANY
 PURPOSE OTHER THAN THAT WHICH IT WAS
 OBTAINED WITHOUT THE EXPRESSED WRITTEN
 CONSENT OF SAMTEC, INC.



520 PARK EAST BLVD, NEW ALBANY, IN 47150
 PHONE: 812-944-6733 FAX: 812-948-5047
 e-Mail: info@SAMTEC.com code: 55322



PROPRIETARY NOTE
THIS DOCUMENT CONTAINS INFORMATION
CONFIDENTIAL AND PROPRIETARY TO
SAMTEC, INC. AND SHALL NOT BE REPRODUCED
OR TRANSFERRED TO OTHER DOCUMENTS OR
DISCLOSED TO OTHERS OR USED FOR ANY
PURPOSE OTHER THAN THAT WHICH IT WAS
OBTAINED WITHOUT THE EXPRESSED WRITTEN
CONSENT OF SAMTEC, INC.



520 PARK EAST BLVD, NEW ALBANY, IN 47150
PHONE: 812-944-6733 FAX: 812-948-5047
e-Mail: info@SAMTEC.com code: 55322