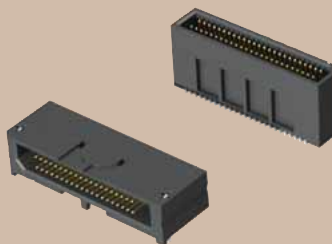


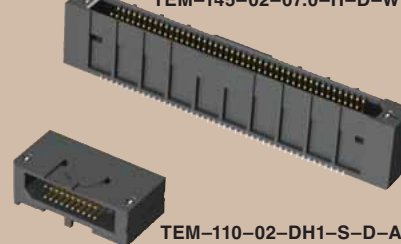


TEMS-125-02-03.0-H-D

TEM-145-02-07.0-H-D-WT



TEM-120-02-DH1-S-D-A



TEM-110-02-DH1-S-D-A

(0,80 mm) .0315"

TEM, TEMS, TEM-DH SERIES

# MICRO TIGER EYE™ HEADER

TEM, TEM-DH Mates with:  
SEM, SEML

TEMS Mates with:  
SEMS

## SPECIFICATIONS

For complete specifications and recommended PCB layouts see [www.samtec.com?TEM](http://www.samtec.com?TEM) or [www.samtec.com?TEMS](http://www.samtec.com?TEMS)

**Insulator Material:**  
Black Liquid Crystal Polymer  
**Terminal Material:**  
Phosphor Bronze  
**Plating:**  
Au or Sn over 50µ" (1,27 µm) Ni  
**Operating Temp Range:**  
-55°C to +125°C  
**Current Rating:**  
2.6 A per pin  
(1 pin powered per row)  
**RoHS Compliant:**  
Yes

**Processing:**  
Lead-Free Solderable:  
Yes  
SMT Lead Coplanarity:  
(0,10 mm) .004" max

## RECOGNITIONS

For complete scope of recognitions see [www.samtec.com/quality](http://www.samtec.com/quality)



TYPE STRIP	1	NO. PINS PER ROW	02	STACK HEIGHT	PLATING OPTION	D	OPTION	OTHER OPTION
TEM = Tiger Eye™ Strip		05, 10, 15, 20, 25 30, 35, 40, 45, 50 (TEM only) (Standard sizes)		-03.0 = 6 mm Stack Height -04.0 = 7 mm Stack Height -07.0 = 10 mm Stack Height	-FG = Gold Flash -G = 10µ" (0,25 µm) Gold on contact, Gold Flash on tail -H = 30µ" (0,76 µm) Gold on contact, Gold Flash on tail		-A = Alignment Pin (Not available with -LC or -WT) -LC = Locking Clip (Not available with -A or -WT) (Manual placement required) -WT = Weld Tab (Not available with -A or -LC)	-K = (5,50 mm) .217" DIA Polyimide film Pick & Place Pad (Required for TEMS) -TR = Tape & Reel (Required for TEMS)

28+  
Gbps

(No. of Positions x (0,80) .0315) + (9,00) .354

(No. of Positions x (0,80) .0315) + (7,00) .276

(0,24) .009

(0,80) .0315

(5,00) .197

(3,70) .146

(0,25) .010

01

02

01

02

STACK HEIGHT	A	MATED HEIGHT* (WHEN MATED WITH SEM/SEMS)
-03.0	(5,610) .2209	6 mm
-04.0	(6,610) .2602	7 mm
-07.0	(9,610) .3783	10 mm

\*Processing conditions will affect mated height.

EXTENDED LIFE PRODUCT

10 year Mixed Flowing Gas with 30µ" Gold  
Call Samtec for maximum mated cycles

### OTHER SOLUTIONS

- (1,27 mm) .050" board-to-board and cable-to-board Tiger Eye™ systems available.
- Board Stacking: See SFM, TFM Series
- Cable Assemblies: See SFSD, TFSD Series Contact Samtec.

### ALSO AVAILABLE (MOQ Required)

- Other sizes
- Other platings

Contact Samtec.

**Note:** Some sizes, styles and options are non-standard, non-returnable.

TEM	1	NO. OF POSITIONS	02	DH1	PLATING OPTION	D	OPTION
		10, 15, 20, 25, 30, 35, 40, 45, 50 (Standard sizes)			-F = Gold Flash on contact, Matte Tin on tail -L = 10µ" (0,25 µm) Gold on contact, Matte Tin on tail -S = 30µ" (0,76 µm) Gold on contact, Matte Tin on tail		-A = Alignment Pin

(No. of Positions x (0,80) .0315) + (9,00) .354

(No. of Positions x (0,80) .0315) + (4,00) .1575

(No. of Positions x (0,80) .0315) + (7,00) .276

(8,50) .335

(6,00) .236

(1,21) .048

(0,80) .0315

(0,25) .010

(0,30) .012

(3,70) .146

(6,28) .247

(7,99) .315

(1,40) .055

(0,87) .034

(0,50) .0197

(1,27) .050 DIA

01

02

01

02

-A OPTION

Due to technical progress, all designs, specifications and components are subject to change without notice.

WWW.SAMTEC.COM