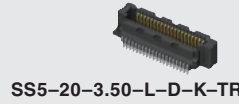




(0,50 mm) .0197"



SS5-20-3.00-L-D-K-TR



SS5 SERIES

ULTRA FINE PITCH SOCKET

SPECIFICATIONS

For complete specifications and recommended PCB layouts see www.samtec.com?SS5

Insulator Material:

Black LCP

Contact Material:

Phosphor Bronze

Plating:

Au or Sn over 50µ" (1,27 µm) Ni

Operating Temp Range:

-55°C to +125°C

Current Rating:

1.5 A per pin (1 pin powered per row)

RoHS Compliant:

Yes

Processing:

Lead-Free Solderable:

Yes

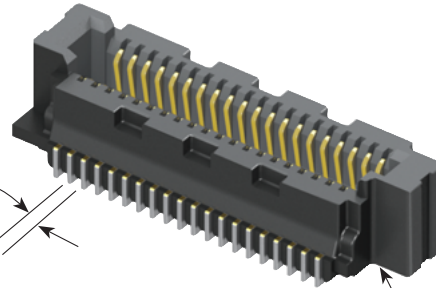
SMT Lead Coplanarity:

(0,10 mm) .004" max

Mates with:

ST5

Ultra-fine
(0,50 mm)
.0197" pitch



Stack heights of 4 mm, 4,5 mm & 5 mm

Narrow body design saves space on board

SS5/ST5 5 mm Stack Height	Rated @ 3dB Insertion Loss*
Single-Ended Signaling	13.5 GHz / 27 Gbps
Differential Pair Signaling	20 GHz / 40 Gbps

*Test board losses de-embedded from performance data.
Performance data for other stack heights and complete test data available at www.samtec.com?SS5 or contact sig@samtec.com

28+
G b p s

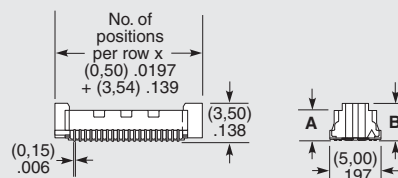
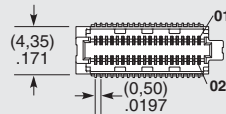
ALSO AVAILABLE (MOQ Required)

- Other lead styles
- Contact Samtec.

SS5	NO. OF POSITIONS	LEAD STYLE	PLATING OPTION	D	K	TR
	-10, -15, -20, -30, -40, -50, -60, -70, -80 (Per Row)	-3.00 = 3.00 mm -3.50 = 3.50 mm	-L = 10µ" (0,25 µm) Gold on contact, Matte Tin on tail	(Required in callout)	-K = (3,50 mm) .138" DIA Polyimide Film Pick & Place Pad	(Required in callout) -TR = Tape & Reel

MATED HEIGHT*		
ST5 LEAD STYLE	SS5 LEAD STYLE	
	-3.00	-3.50
-1.00	(4,00) .157	(4,50) .177
-1.50	(4,50) .177	(5,00) .197

*Processing conditions will affect mated height.



LEAD STYLE	A	B
-3.00	(2,85) .112	(3,50) .138
-3.50	(3,35) .132	(4,00) .157

Note: Some lengths, styles and options are non-standard, non-returnable.