



USB Drivers installation

User Manual

UM-DR0001 (v 1.00) 17 February 2012

Trenz Electronic GmbH

Overview

This manual describes driver installation process for generic Cypress and dedicated DEWESoft USB drivers.

Table of Contents

1 Drivers.....	3
1.1 Dedicated driver.....	3
1.2 Generic driver.....	6
2 Glossary of Abbreviations and Acronyms.....	9
3 Legal Notices.....	9
3.1 Document Warranty.....	9
3.2 Limitation of Liability.....	9
3.3 Copyright Notice.....	10
3.4 Technology Licenses.....	10
4 Environmental protection.....	10
4.1 REACH (Registration, Evaluation, Authorisation and Restriction of Chemicals) compliance statement.....	10
4.2 RoHS (Restriction of Hazardous Substances) compliance statement.....	10
4.3 WEEE (Waste Electrical and Electronic Equipment).....	10
Document Change History.....	12

1 Drivers

To provide convenient interface from host computer to TE USB equipped module, USB driver should be installed to operating system. There is 2 drivers to work with TE modules:

- Generic driver, which work with default controller configuration.
- Dedicated driver, which works with custom FX2 firmware.

Generic driver used only for initial USB microcontroller programming and **not needed for normal work flow**.

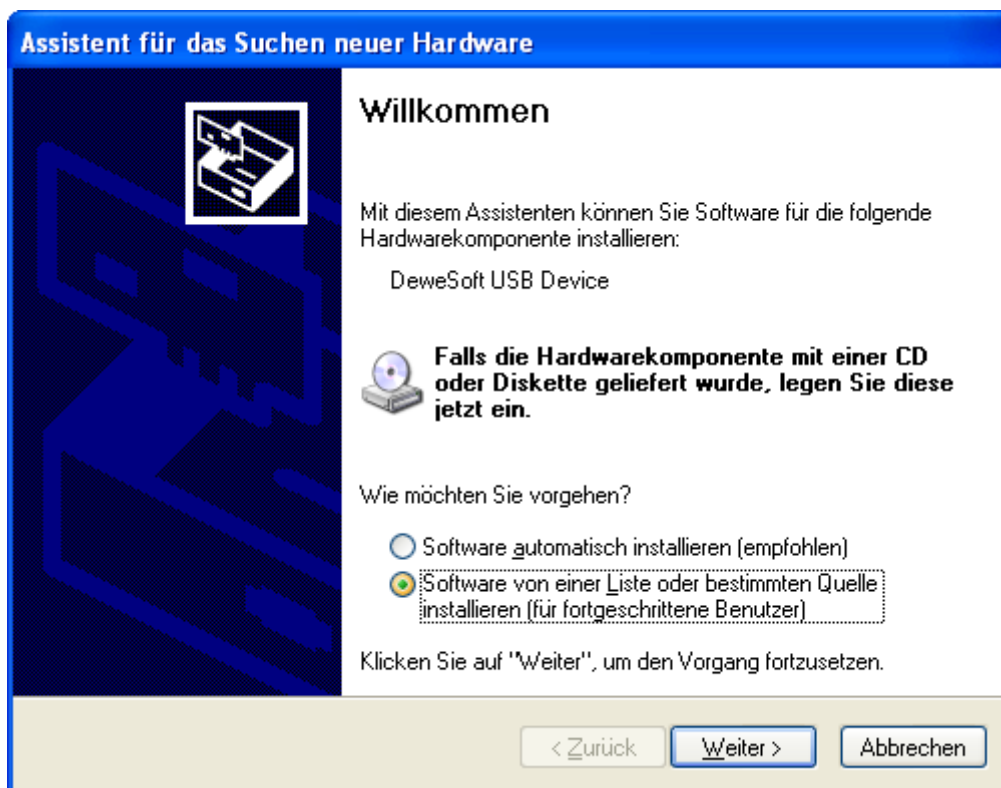
Most users **need to install only dedicated driver**.

1.1 Dedicated driver

This driver used to work with modules which have DEWESoft firmware and Vendor ID / Device ID programmed. All TE modules supplied with programmed USB controller and corresponding Vendor ID / Device ID in EEPROM.

Before connect USB cable, check that EEPROM switch is on "ON" state (USB controller connected to EEPROM). Refer your module manual for switch location.

Connect USB cable and wait until the operating system detects new hardware and starts the hardware assistant and answer the hardware assistant questions as shown in the following example.



Assistent für das Suchen neuer Hardware

Wählen Sie die Such- und Installationsoptionen.


Diese Quellen nach dem zutreffendsten Treiber durchsuchen
Verwenden Sie die Kontrollkästchen, um die Standardsuche zu erweitern oder einzuschränken. Lokale Pfade und Wechselmedien sind in der Standardsuche mit einbezogen. Der zutreffendste Treiber wird installiert.

Wechselmedien durchsuchen (Diskette, CD,...)

Folgende Quelle ebenfalls durchsuchen:
C:\TE0300\driver

Nicht suchen, sondern den zu installierenden Treiber selbst wählen
Verwenden Sie diese Option, um einen Gerätetreiber aus einer Liste zu wählen. Es wird nicht garantiert, dass der von Ihnen gewählte Treiber der Hardware am besten entspricht.

Hardwareinstallation

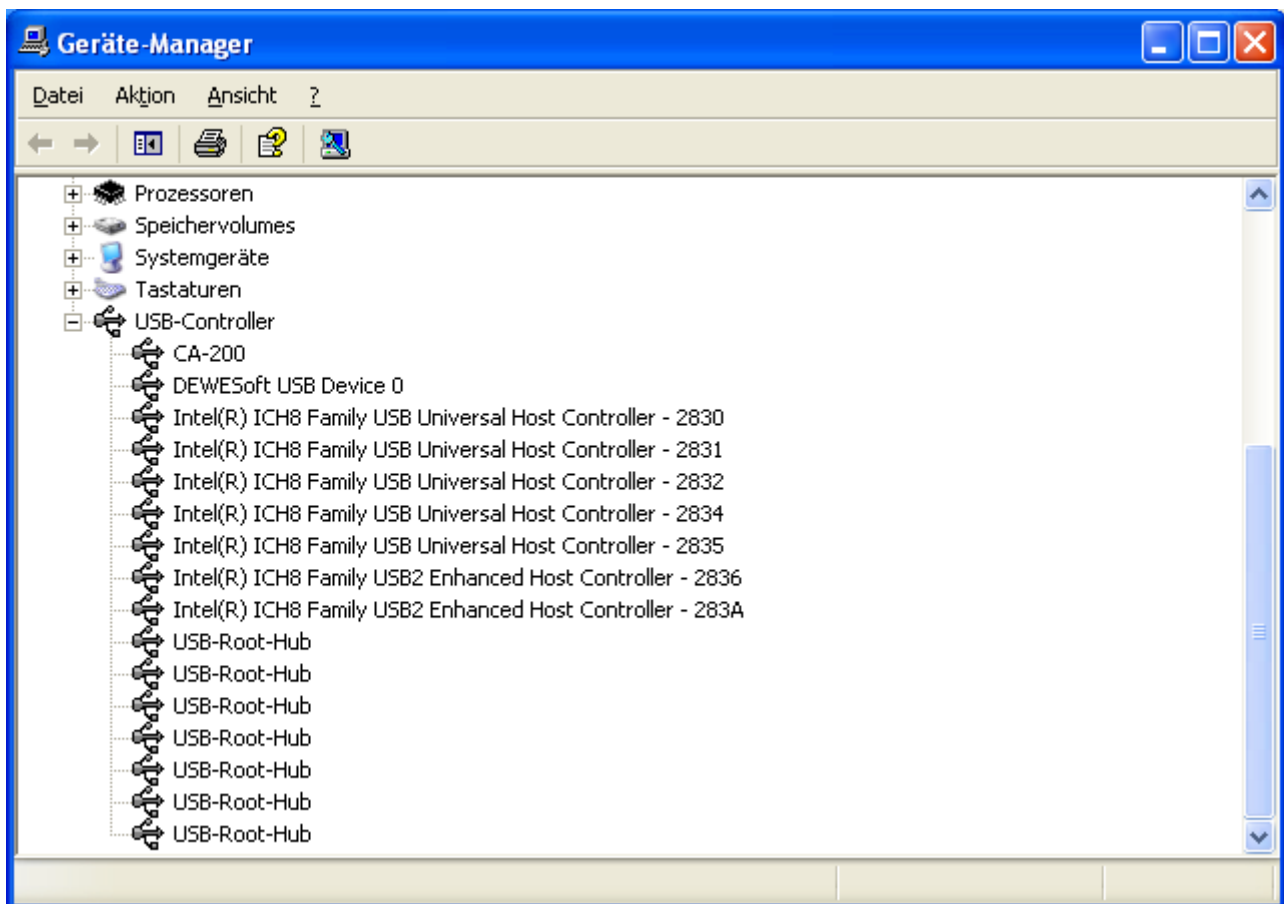
 Die Software, die für diese Hardware installiert wird:
DEWESoft USB Device

hat den Windows-Logo-Test nicht bestanden, der die Kompatibilität mit Windows XP überprüft. [Warum ist dieser Test wichtig?](#)

Das Fortsetzen der Installation dieser Software kann die korrekte Funktion des Systems direkt oder in Zukunft beeinträchtigen. Microsoft empfiehlt strengstens, die Installation jetzt abzubrechen und sich mit dem Hardwarehersteller für Software, die den Windows-Logo-Test bestanden hat, in Verbindung zu setzen.



Check that in the "Device Manager" under "USB-Controller" the "DEWESoft USB Device 0" has been added.

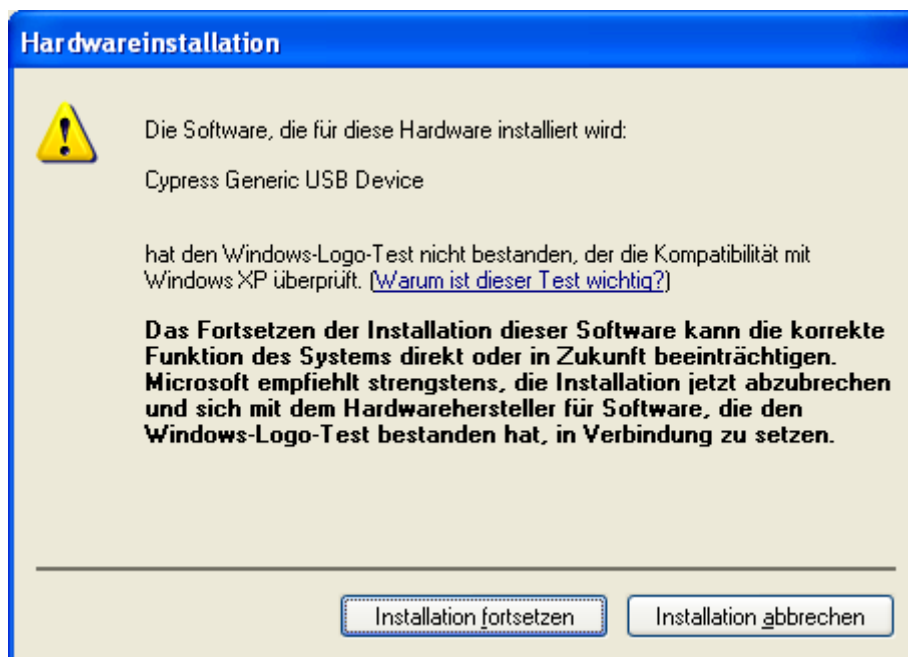
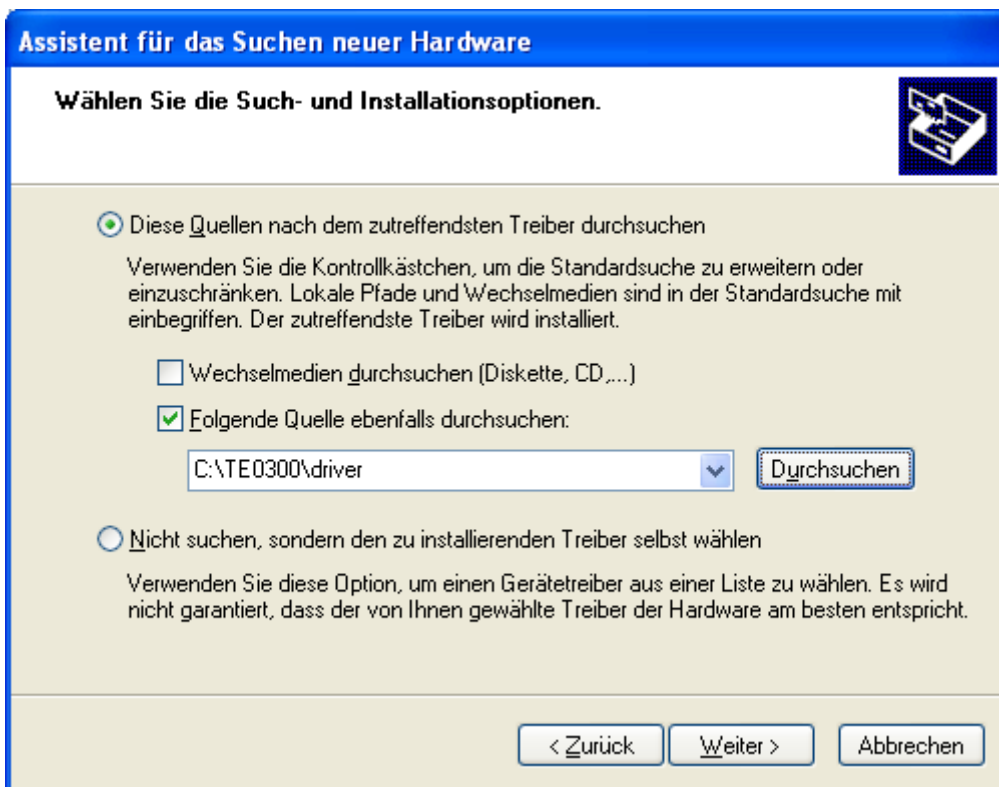


1.2 Generic driver

Most **users don't need this driver**, this driver used only for initial USB microcontroller programming, which was already done for all supplied TE modules.

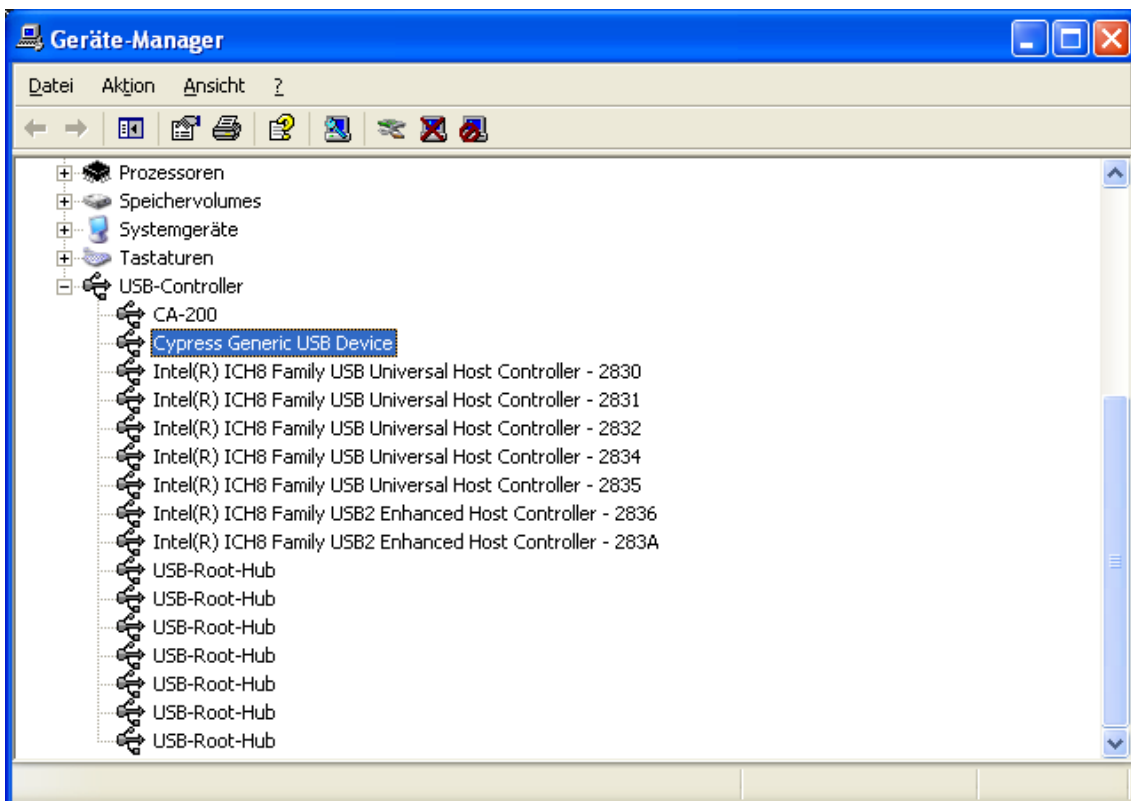
If the USB microcontroller (Cypress EZ-ESB FX2) driver is not installed on the host computer, then the easiest way to do it is the following:

- disconnect the module if it connected or leave the module unconnected;
- configure the module such that the USB microcontroller will provide its default vendor ID and device ID to the USB host. To do it put "EEPROM" switch to "OFF" state. (Refer your module manual for switch location)
- connect the module to the host computer through the USB interface;
- wait until the operating system detects new hardware and starts the hardware assistant;
- put "EEPROM" switch to "ON" (EEPROM connected to USB microcontroller);
- answer the hardware assistant questions as shown in the following example.





Check that in the “Device Manager” under “USB-Controller” the “Cypress Generic USB Device” has been added.



After that I²C EEPROM should be programmed with right Vendor ID / Device ID, see firmware recovery chapere in UM-Firmware.pdf.

2 Glossary of Abbreviations and Acronyms



A WARNING notice denotes a hazard. It calls attention to an operating procedure, practice, or the like that, if not correctly performed or adhered to, could result in damage to the product or loss of important data. Do not proceed beyond a WARNING notice until the indicated conditions are fully understood and met.



A CAUTION notice denotes a risk. It calls attention to an operating procedure, practice, or the like that, if not correctly performed or adhered to, could result in a fault. (undesired condition that can lead to an error) Do not proceed beyond a CAUTION notice until the indicated conditions are fully understood and met.

API	application programming interface
B2B	board-to-board
DSP	digital signal processing; digital signal processor
EDK	Embedded Development Kit
IOB	input / output blocks; I/O blocks
IP	intellectual property
ISP	In-System Programmability
PB	push button
SDK	Software Development Kit
TE	Trenz Electronic
XPS	Xilinx Platform Studio

3 Legal Notices

3.1 Document Warranty

The material contained in this document is provided “as is” and is subject to being changed at any time without notice. Trenz Electronic does not warrant the accuracy and completeness of the materials in this document. Further, to the maximum extent permitted by applicable law, Trenz Electronic disclaims all warranties, either express or implied, with regard to this document and any information contained herein, including but not limited to the implied warranties of merchantability, fitness for a particular purpose or non infringement of intellectual property. Trenz Electronic shall not be liable for errors or for incidental or consequential damages in connection with the furnishing, use, or performance of this document or of any information contained herein.

3.2 Limitation of Liability

In no event will Trenz Electronic, its suppliers, or other third parties mentioned in this document be liable for any damages whatsoever (including, without limitation, those resulting from lost profits, lost data or business interruption) arising out of the use, inability to use, or the results of use of this document, any documents linked to this document, or the materials or information contained at any or all such documents. If your use of the materials or information from this document results in the need for servicing, repair or correction of equipment or data, you assume all costs thereof.

3.3 Copyright Notice

No part of this manual may be reproduced in any form or by any means (including electronic storage and retrieval or translation into a foreign language) without prior agreement and written consent from Trenz Electronic.

3.4 Technology Licenses

The hardware / firmware / software described in this document are furnished under a license and may be used /modified / copied only in accordance with the terms of such license.

4 Environmental protection

To confront directly with the responsibility toward the environment, the global community and eventually also oneself. Such a resolution should be integral part not only of everybody's life. Also enterprises shall be conscious of their social responsibility and contribute to the preservation of our common living space. That is why Trenz Electronic invests in the protection of our Environment.

4.1 REACH (Registration, Evaluation, Authorisation and Restriction of Chemicals) compliance statement

Trenz Electronic is a manufacturer and a distributor of electronic products. It is therefore a so called downstream user in the sense of REACH. The products we supply to you are solely non-chemical products (goods). Moreover and under normal and reasonably foreseeable circumstances of application, the goods supplied to you shall not release any substance. For that, Trenz Electronic is obliged to neither register nor to provide safety data sheet.

According to present knowledge and to best of our knowledge, no SVHC (Substances of Very High Concern) on the Candidate List are contained in our products.

Furthermore, we will immediately and unsolicited inform our customers in compliance with REACH - Article 33 if any substance present in our goods (above a concentration of 0,1 % weight by weight) will be classified as SVHC by the European Chemicals Agency (ECHA).

4.2 RoHS (Restriction of Hazardous Substances) compliance statement

Trenz Electronic GmbH herewith declares that all its products are developed, manufactured and distributed RoHS compliant.

4.3 WEEE (Waste Electrical and Electronic Equipment)

Information for users within the European Union in accordance with Directive 2002/96/EC of the European Parliament and of the Council of 27 January 2003 on waste electrical and electronic equipment (WEEE).

Users of electrical and electronic equipment in private households are required not to dispose of waste electrical and electronic equipment as unsorted municipal waste and to collect such waste electrical and electronic equipment separately. By the 13 August 2005, Member States shall have ensured that systems are set up allowing final holders and distributors to return waste electrical and electronic equipment at least free of charge. Member States shall ensure the availability and accessibility of the necessary collection facilities. Separate collection is the precondition to ensure specific treatment and recycling of waste electrical and

electronic equipment and is necessary to achieve the chosen level of protection of human health and the environment in the European Union. Consumers have to actively contribute to the success of such collection and the return of waste electrical and electronic equipment.

Presence of hazardous substances in electrical and electronic equipment results in potential effects on the environment and human health. The symbol consisting of the crossed-out wheeled bin indicates separate collection for waste electrical and electronic equipment.



Document Change History

ver.	date	author	description
1.00	02/17/12	AIK	Release.